

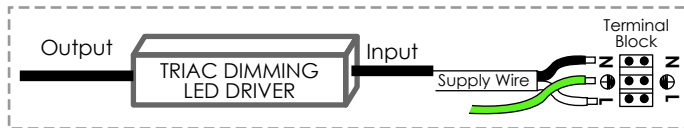
Thank you for your purchase.

Welcome to the Avenue Lighting Family. Please follow these instructions carefully as they contain important information about the safety, use and disposal of this product. Read and understand all instructions before proceeding with assembly and installation of this fixture.

- This fixture **MUST** be installed by a licensed electrician.
- All parts must be used as indicated in this install sheet.
- DO NOT substitute any parts, leave parts out, or use parts that are worn out or broken.
- This fixture is intended for installation in accordance with the **National Electrical Code (NEC) and all local code specifications.**
- Use **ONLY** the supplied LED driver to power this fixture.
- Do **NOT** operate fixture if any lights are not operating or are operating improperly in order to prevent further damage.

Preparation:

Carefully remove the fixture from the carton and check that all parts are included as shown in the illustration. If any parts are missing or damaged, DO NOT attempt to assemble the product.



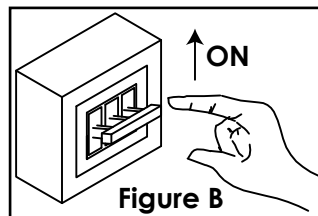
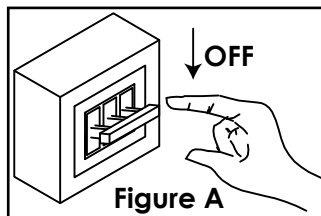
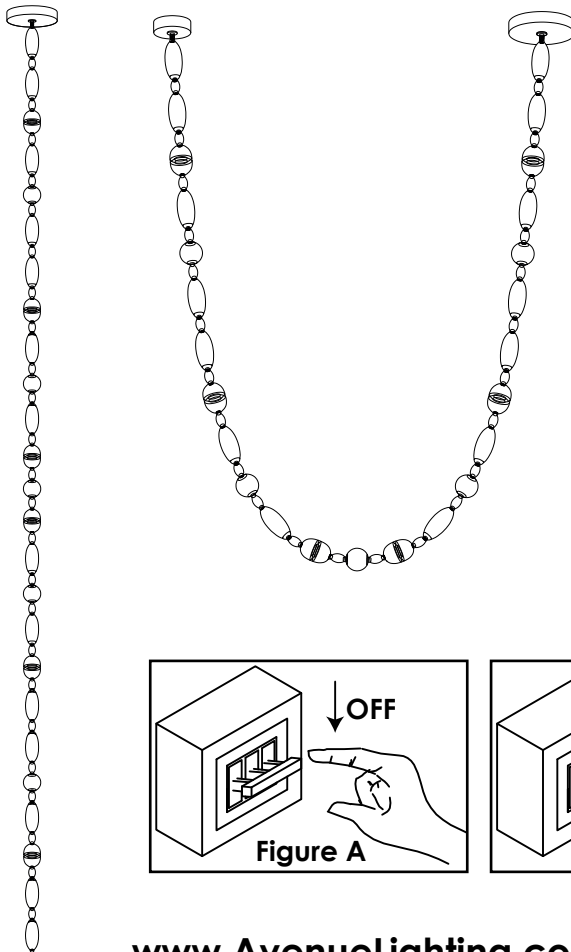
Tools Required

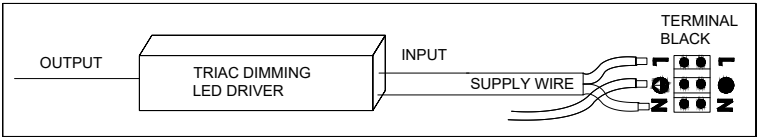
(not included):

- ~ Phillips screwdriver
- ~ Flathead screwdriver
- ~ Wire Strippers
- ~ Electrical Tape
- ~ Ladder
- ~ Safety Glasses

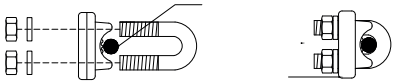
Assembly Instructions:

1. Please turn off the power before installing the lamp [see figure A]
2. Remove the mounting bracket from the top box, then place the mounting bracket on the junction box. Next tighten with the junction box screw.
3. Connect the NEUTRAL WIRE from junction box to NEUTRAL (WHITE) wire from fixture with a wire nut. Connect the LIVE WIRE from junction box to LIVE (BLACK) wire from fixture with a wire nut.
4. Wrap the naked copper in the junction box around the green screw. Lock the green screw in the tooth hole. Connect the grounding wire of the lamp and the naked copper of the junction box with the terminal.
5. Fix the U shape steel buckle on the steel rope inside canopy to the keel.
6. Secure the big canopy to the mounting plate with decorative nuts and fix small canopy with side screws.
7. For hanging straight down style instead of necklace, please make use of the decorative knob from accessories bag. Need cut the steel rope by qualified electrician from the small canopy and insert into the decorative knob.
8. When installing the fixture, please do not over-bend the lamp body in order to avoid connection metal parts scratch
9. Turn on the power [see figure B]

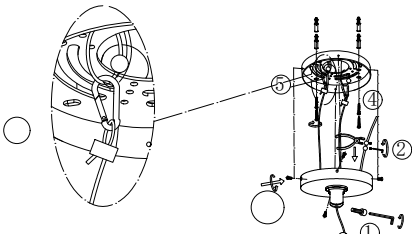
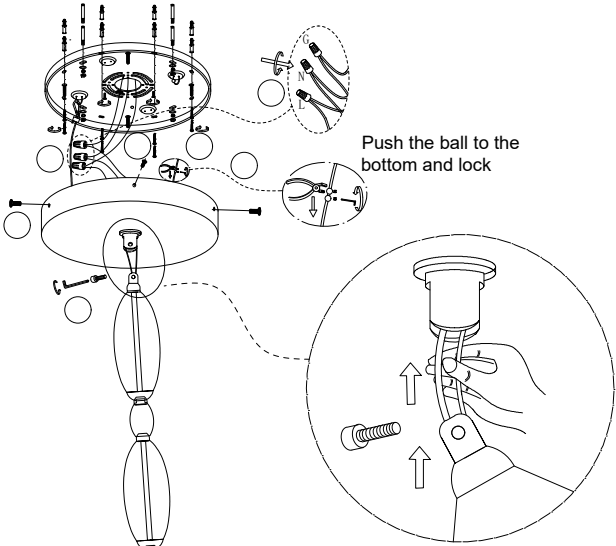




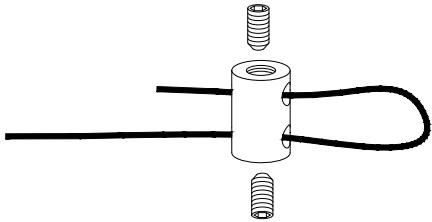
steel safety wire



steel buckle The steel buckle is used for fixing steel safety wire

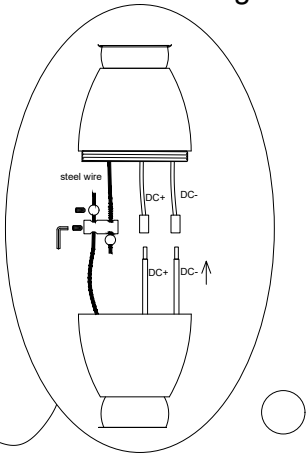


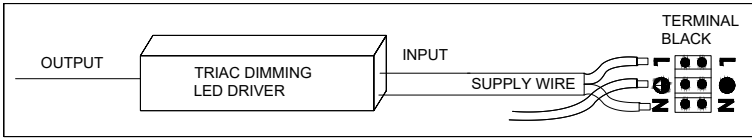
steel safety wire



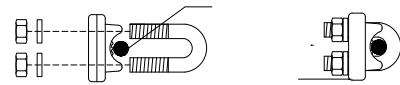
steel buckle The steel buckle is used for fixing steel safety wire

Connect the two KD light body segments into a full unit.

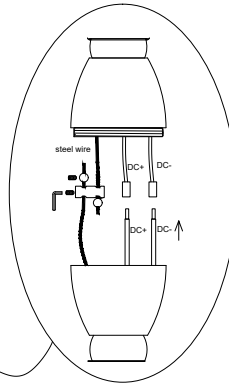
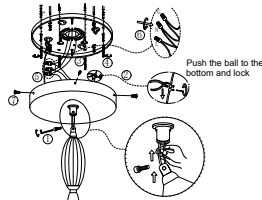




steel safety wire

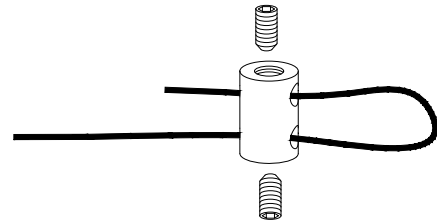


steel buckle The steel buckle is used for fixing steel safety wire



Connect the two KD light body segments into a full unit.

steel safety wire



steel buckle The steel buckle is used for fixing steel safety wire

